



LIL' CHARRO GRILL STAND USER MANUAL

MODEL # LC-22423-01

Lil' Charro® is a registered
trademark All Rights Reserved.

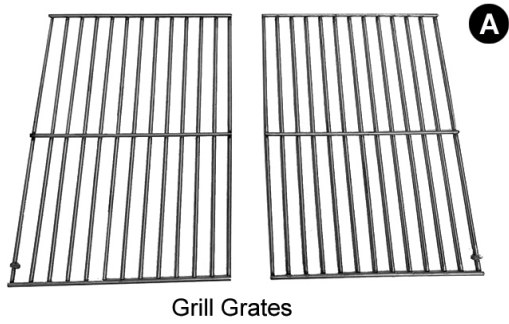


Questions, problems, missing parts? Before returning to your retailer, chat with our service department at service@elcharro.co, 9 a.m. - 5 p.m., CST, Monday - Friday.

TABLE OF CONTENTS

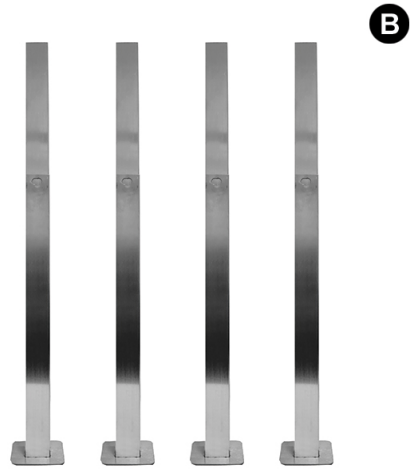
Package Contents.....	3
Introduction	4
Safety Information.....	4
Preparation	5
Assembly Instructions	6
Limited Warranty.....	9
Replacement Parts And Accessories	10

PACKAGE CONTENTS



Grill Grates

A



Legs

B



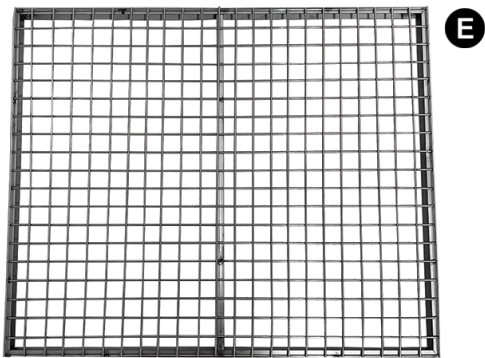
Main Unit

C



Fire Tray

D



Mesh Lower Shelf

E



Left Side Shelf

F



Handle

H



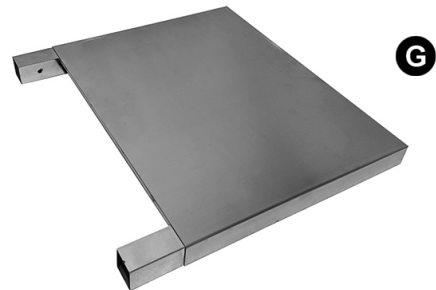
Large Wing Bolts X4

I



Small Wing Bolts X4

J



Right Side Shelf

G



Latch

L



Small Screws X2

K



Shelf Pins X2

M

INTRODUCTION

Please read and understand this entire manual before attempting to assemble, operate, or install the product.

Your Lil' Charro has been engineered and manufactured to our high standard for dependability, ease of operation, and operator safety. When properly cared for, it will give you years of trouble-free performance. Please remember, this device is intended to be used with the El Charro Rotisserie Kit. Save this manual for future reference!

NOTE: This manual applies to the Lil Charro LC-22423-01. Please visit www.elcharro.co for further information on assembly and specific use.

SAFETY INFORMATION

WARNING: Please read and understand all instructions before use.

Failure to follow all Warnings, Tips and instruction contained in this manual may result in electric shock, fire, and/or serious personal injury or property damage.

When using this unit, basic safety precautions should be followed, including the following:

1. Read all instructions and warnings before use.
2. Do not touch hot surfaces.
3. This unit should be properly assembled & positioned in accordance with these instructions before use.
4. The use of an accessory not evaluated for use with this product may cause injuries, property damage, or damage to the unit.
5. To protect against electric shock, do not immerse cords, plugs, or the appliance in water or any other liquid when using with the El Charro Rotisserie Kit.
6. Close supervision is necessary when the unit is used near children or pets.
7. Do not use indoors! This LC-22423-01 is designed for outdoor use only. If used indoors, toxic fumes will accumulate and cause serious bodily injury or death and/or property damage.
8. Only use this LC-22423-01 outdoors in a well-ventilated area. Do not use in a garage, building, breezeway or any other enclosed area.
9. Do not use this LC-22423-01 under any overhead combustible construction.
10. Improper assembly may be dangerous. Please follow the assembly instructions in this manual. Do not use the LC-22423-01 unless all parts are in place.



SAFETY INFORMATION (CONTINUED)

11. You should exercise reasonable care when operating your LC-22423-01. It will be hot during cooking and should never be left unattended during use.
12. Do not leave infants, children or pets unattended near a hot LC-22423-01.
13. Do not attempt to move a hot LC-22423-01. Allow the grill to cool before moving.
14. Do not use this LC-22423-01 within five feet of any combustible material. Combustible materials include, but are not limited to wood or treated wood decks, patios and porches.
15. Do not wear flammable clothing or clothing with loose flowing sleeves while lighting or using the LC-22423-01.
16. Do not use the LC-22423-01 in high winds.
17. Keep the LC-22423-01 on a secure, level surface at all times, clear of combustible material.
18. This device is designed with the intended use with El Charro Rotisserie Kits. While it can be used using other accessories, it may affect your warranty.
19. Do not store this unit outdoors. Damage to this unit due to excessive moisture is not covered under warranty.
20. Keep the cooking area clear of flammable vapor and liquids, such as gasoline, alcohol, etc., and combustible material.
23. Handle and store hot electric starters carefully, if they are used.
24. Keep electrical wires and cords away from the hot surfaces of the LC-22423-01 and away from high traffic areas.
25. The use of alcohol, prescription or non-prescription drugs may impair the consumer's ability to properly assemble or safely operate the LC-22423-01.
26. This LC-22423-01 is not intended to be installed in or on recreational vehicles and/or boats.
27. This LC-22423-01 is not intended for and should never be used as a heater.
28. Using abrasive cleaners on the LC-22423-01 itself will damage the finish.
29. The LC-22423-01 should be thoroughly cleaned on a regular basis.
30. Do not use the LC-22423-01 for other than its intended use.

FAILURE TO OBSERVE THESE WARNINGS AND FAILURE TO FOLLOW ALL TIPS AND INSTRUCTIONS CONTAINED HEREIN MAY CAUSE SERIOUS BODILY INJURY OR DEATH, OR A FIRE, ELECTROCUTION OR EXPLOSION RESULTING IN DAMAGE TO PROPERTY, INCLUDING THE PRODUCT ITSELF OR OTHER PROPERTY!!

PREPARATION

Before beginning assembly of product, make sure all parts of the grill are present. Compare parts with contents list above. If any part is missing or damaged, do not attempt to assemble the product. Contact customer service for replacement parts.

Estimated Assembly Time: 20 minutes

ASSEMBLY INSTRUCTIONS

STEP 1: INSERT THE GRILL STAND LEGS (B) TO THE MAIN UNIT (C)

(Make sure the holes for the bolts face the front of the unit)



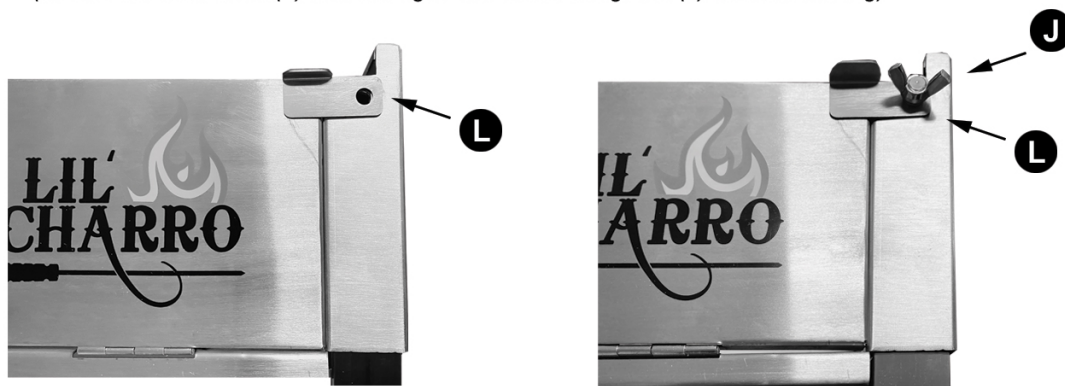
STEP 2: ADD SMALL WING BOLTS (J) TO MAIN UNIT (C) TO ATTACH THE LEGS

(Repeat this step for each leg)



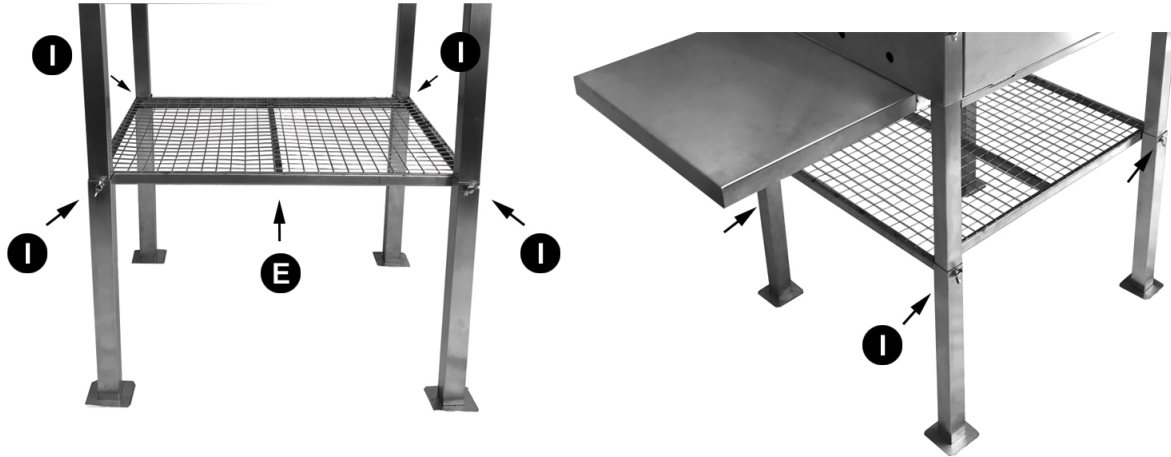
STEP 3: PLACE DOOR LATCH (L) ON RIGHT SIDE OF MAIN UNIT

(Secure the door latch (L) with the right side Small Wing Bolt (J) used for the leg)



ASSEMBLY INSTRUCTIONS

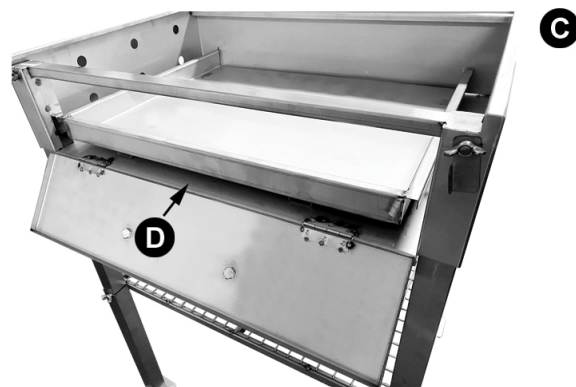
STEP 4: ATTACH THE LOWER MESH SHELF (E) USING THE LARGE WING BOLTS (I)
(Repeat this step by for each leg)



STEP 5: ATTACH DRAWER HANDLE (H) TO DRAWER USING 2 SMALL SCREWS (K)
(Tighten the small screws using a wrench.)



STEP 6: PLACE THE FIRE TRAY (D) INSIDE OF THE MAIN UNIT (C)
(The Fire Tray is designed to slide in and out of the drawer opening)



ASSEMBLING THE KIT AND SKEWERS

STEP 7: ATTACH THE SIDE SHELVES (F)(G)

(Both Left and Right Side Shelves Slide into the Main Unit)



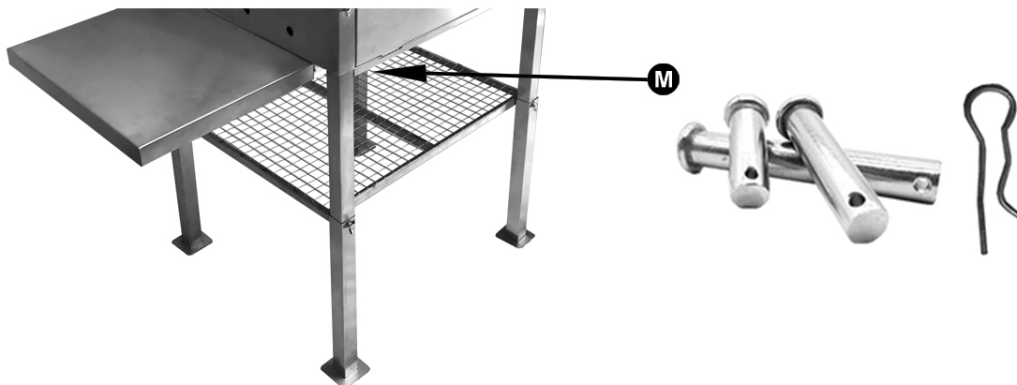
STEP 8: FIT THE GRILL GRATES (A) ON TOP OF MAIN UNIT

(There are pegs on one side of each grill grate. These pegs should be in front.)



STEP 9: INSERT THE SHELF PINS (M) INTO THE LEGS

(The Pins are designed to hold the side shelves in place during use)



LIMITED WARRANTY

El Charro company warrants directly to you, the original consumer, that the Lil' Charro purchased by you will be free from defects in materials and workmanship for a one year period from the date of delivery of the product. This warranty is not transferable and requires reasonable proof of purchase.

This warranty does not cover products that have been altered, serviced or repaired by any unauthorized service provider, including the consumer. Damage caused by normal use, rust, improper use, disassembly of parts, internal or external scratches, and/or excessive heat, is considered normal wear and tear and does not constitute defective materials or workmanship covered under this Limited Warranty. This Limited Warranty does not cover any failures or operating difficulties due to accident, abuse, misuse, alteration, misapplication, vandalism, improper installation or improper maintenance or service, or failure to perform normal and routine maintenance. Deterioration or damage due to severe weather conditions such as hail, hurricanes, earthquakes or tornadoes, discoloration due to exposure to chemicals, either directly or in the atmosphere, is not covered by this Limited Warranty. This Limited Warranty does not apply to lost or stolen products. This Limited Warranty shall be limited to the repair or replacement of parts which prove defective under normal use and service, and which upon examination shall indicate to the satisfaction of El Charro that they are defective.

El Charro does not authorize any repair or attempted repair by anyone other than El Charro, nor does it authorize any person or company to assume for it any other obligation or liability in connection with the sale, installation, use, removal, return or replacement of its products; and no such representations are binding on El Charro.

El Charro will repair or replace faulty products, at its sole discretion and as specified herein. If El Charro confirms the defect and approves the claim, it will elect to repair or replace such parts without charge to you. If you are required to return defective parts, transportation charges must be prepaid. El Charro will return warranted parts to the purchaser, carrier or postage prepaid.

THIS LIMITED WARRANTY IS EXPRESSLY IN LIEU OF ANY OTHER WARRANTIES, EXPRESS OR IMPLIED, INCLUDING ANY WARRANTY OF MERCHANTABILITY OR FITNESS FOR A PARTICULAR PURPOSE. REMEDIES UNDER THIS WARRANTY ARE LIMITED TO THE PROVISIONS OF MATERIAL AND SERVICES, AS SPECIFIED HEREIN. El Charro is not liable for any special, exemplary, indirect or consequential damages due to a failure or defect in workmanship or materials.

WARNING



WARNING: Do not use any abrasive cleaning supply as it will scratch the grill.



www.elcharro.co

REPLACEMENT PARTS AND ACCESSORIES

Visit www.elcharro.co for any replacement parts and other accessories.