



Feel the Difference®

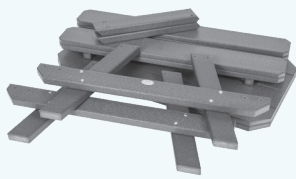
# Assembly Instructions

## Child's Table (Pl-TaC)



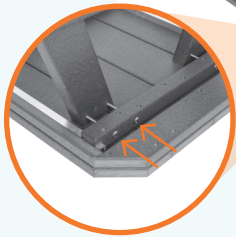
**Tools Needed:** Hammer, 7/16" wrench, #2 square bit screw driver or power driver. No drilling is required. All the necessary holes are pre-drilled. Bolts fit snugly in the holes. You may need to use a hammer to drive the bolts through the holes.

### Step 1 & 2 — Install Legs



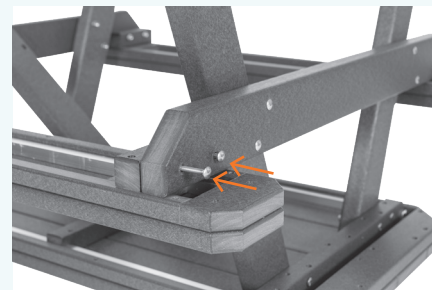
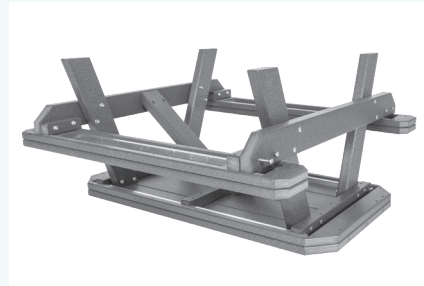
- 16 - 3/4" Bolts
- 16 Flange Nuts
- 4 - 2 1/2" Screws
- 4 - 2" Screws

Lay the tabletop upside down on a protected surface such as cardboard or blankets.



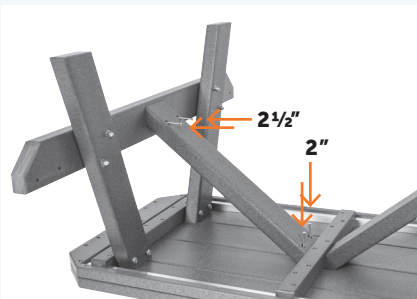
Match the number on the legs to the numbers on the table for the correct leg position. Line up the bolt holes properly. Fasten the legs using the bolts and nuts provided. Tighten the nuts securely.

### Step 4 — Install seats



Place the table in an upright position. Match the number on the seats with the numbers on the legs for the correct seat position. Place the seat on the frame as shown. Line up the bolt holes properly. Fasten securely with the bolts and nuts provided.

### Step 3 — Install Braces



Install the angle braces. Fasten with 2 1/2" screws into leg and 2" screws into tabletop.



Congratulations!  
Your **Child's Table**  
is ready to enjoy!