



Feel the Difference®

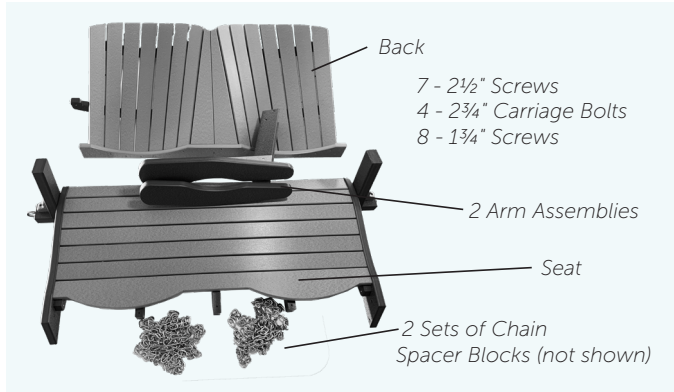
Assembly Instructions

SeaAira Adirondack Swing — Page 1

Tools Needed: Hammer, 7/16" wrench, #2 square bit screw driver or power driver, punch.
No drilling is required. All the necessary holes are predrilled. Bolts fit snugly in the holes.
You may need to use a hammer to drive the bolts through the holes.

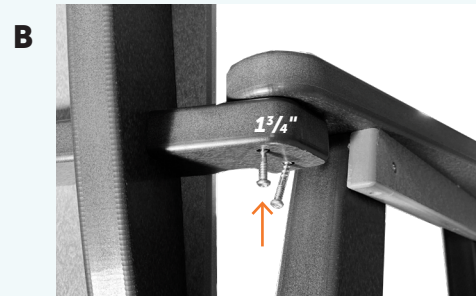
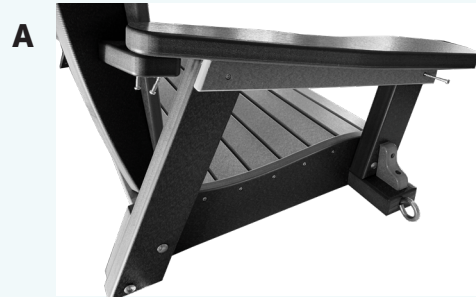


Parts



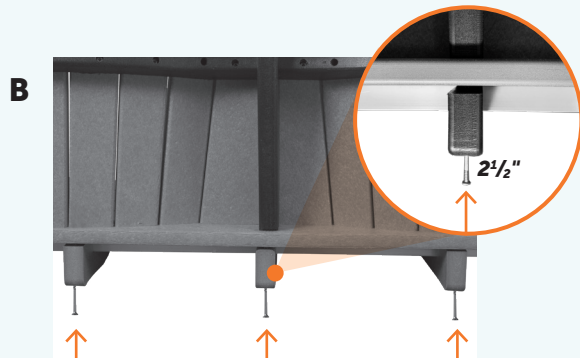
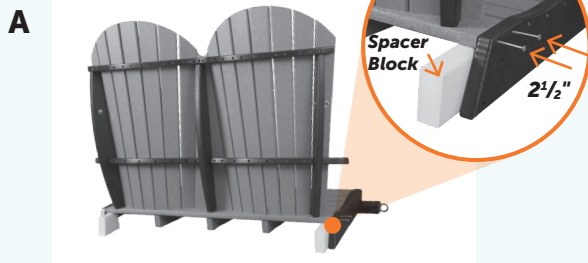
Step 2 — Fasten Arms to Seat

1 3/4" screws, Arm Assembly



Step 1 — Fasten Seat to Back

2½" Screws, Back, Seat



- A. Place the arm assembly so that it aligns with the pilot holes of the back assembly and seat assembly as shown.
- B. Insert 2, 1 3/4" screws in the pilot holes of the back cross-piece and tighten to secure the Back and arm assembly.
- C. Insert a 1 3/4" screw into the pilot hole at the front of the arm assembly and tighten to secure the arm assembly to the Seat.

Repeat for the second arm assembly.

- Place the seat assembly on a clean flat work surface.
- A. Place the two spacer blocks close to the side rails of the seat assembly where the back attaches. Set the back on top of the spacer blocks. Keep the spacing between the seat slat the same as the other slats. Fasten with four 2½" screws using the pilot holes in the seat side rail.
- B. Using the pilot holes place three 2½" screws in the bottom of the seat assembly to secure it to the back.

Continued on back



Feel the Difference®

Assembly Instructions

SeaAira Adirondack Swing — Page 2

Step 3 — Fasten the Chain

2 Sets of Chain. Chain connector links.



Attach the shortest length of chain to the eye bolt in the back using the chain connector link. Tighten the threaded chain connector link securely.

Attached the second longest chain to the eye bolt in the seat using the chain connector link. Tighten the threaded chain connector link securely.

Repeat on the other side of the swing



Congratulations!
Your **SeaAira Adirondack Swing**
is ready to enjoy!