

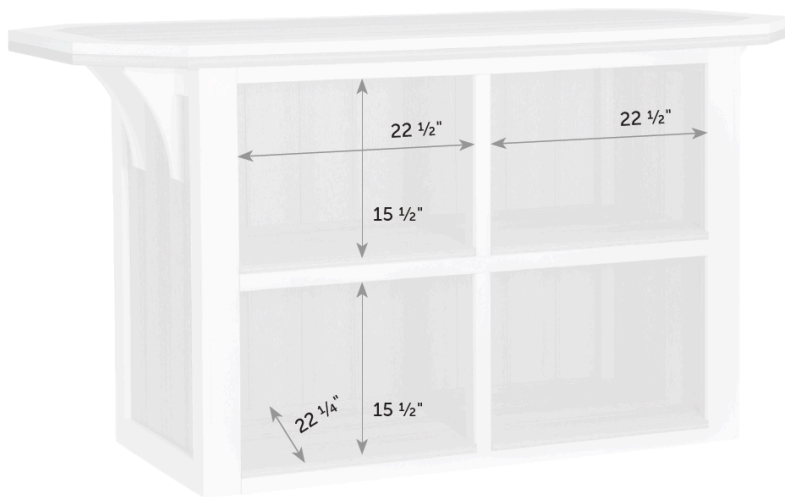
Removable top for easy handling.

SummerSide Bar

Catalog Pg. 67

Freight

Item #	W x L	Lb.	Zones	2	3	4	5	6	7	8
SU-Ba-35x48	35" x 48"	205		619.00	672.00	744.00	799.00	852.00	905.00	965.00
SU-Ba-35x60	35" x 60"	235		619.00	672.00	744.00	799.00	852.00	905.00	965.00
SU-Ba-35x72	35" x 72"	275		619.00	672.00	744.00	799.00	852.00	905.00	965.00
SU-Ba-35x96	35" x 96"	425		650.00	750.00	850.00	950.00	1,050.00	1,150.00	1,250.00



Width of shelf opening will change with size. 35" x 72" is shown. 48" and 60" do not have center support.